

# VP-3W Series

3W 4:1 Regulated Single & Dual output

## Features

- Wide 4:1 Input Range
- Full SMD Technology
- 1500 VDC Isolation, Up to 3500 VDC
- Continuous Short Circuit Protection
- Efficiency up to 80%
- -40 ~ 85°C Operation Temperature Range
- Metal Case Standard, Optional Plastic Case



The VP series is a family of cost effective 3W single & dual output DC-DC converters. These converters are consisted with Nickle-coated copper in a 24-pin DIL package with high performance features such as 1500 VDC ~ 3500VDC input/output isolation voltage, continuous short circuit protection with automatic restart and tight line / load regulation. Devices are encapsulated using flame retardant resin. Input voltages of 24 and 48 with output voltage of 3.3, 5, 9, 12, 15, 24,  $\pm 3.3$ ,  $\pm 5$ ,  $\pm 9$ ,  $\pm 12$ ,  $\pm 15$  and  $\pm 24$  Vdc. High performance features include high efficiency operation up to 80% and output voltage accuracy of  $\pm 1\%$  maximum.

All specifications typical at Ta=25°C, nominal input voltage and full load unless otherwise specified

OUTPUT SPECIFICATIONS	
Voltage accuracy	$\pm 1\%$
Line regulation	$\pm 0.5\%$
Load regulation	$\pm 0.5\%$ (Output 3.3V / $\pm 3.3$ V Model) $\pm 1.5\%$
Ripple & noise (20 MHz bandwidth)(1)	60mV pk-pk
Short circuit protection	Indefinite(Automatic Recovery)
Temperature coefficient	$\pm 0.02\%/^{\circ}\text{C}$
Capacitor load(2)	See table

INPUT SPECIFICATIONS	
Voltage Range	See table
Max. Input Current	See table
No-Load Input Current	See table
Input Filter	PI Type
Input Reflected Ripple Current(3)	35mA pk-pk

GENERAL SPECIFICATIONS	
Efficiency	See table, typ
I/O Isolation Voltage(60 sec)	
Input/Output	1500~3500Vdc
Metal Case/Input & Output	1000Vdc
I/O Isolation Capacitance	470 pF Typ.
I/O Isolation Resistance	1000M Ohm
Switching Frequency	266kHz, typ
Humidity	95% rel H
Reliability Calculated MTBF(MIL-HDBK-217 F)	>1.121 Mhrs
Safety Standard : (designed to meet)	IEC 60950-1

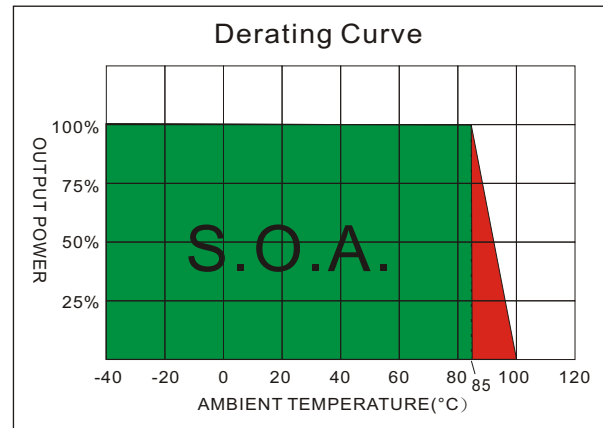
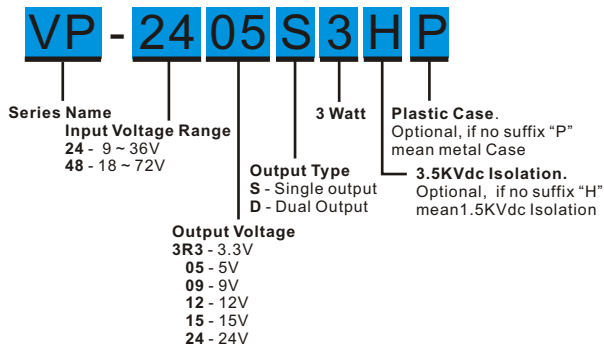
PHYSICAL SPECIFICATIONS	
Case Material	Nickel-coated Copper
Base Material	Non-conductive Black Plastic(UL94V-0 rated)
Pin Material	$\Phi 0.5$ mm Brass Solder-coated
Potting Material	Epoxy (UL94V-0 rated)
Weight	17.0g(Metal Case)/13.5g(Plastic Case)
Dimensions	1.25"x0.8"x0.4"

ENVIRONMENT SPECIFICATIONS	
Operating Temperature	-40°C~85°C(See Derating Curve)
Maximum Case Temperature	100°C
Storage Temperature	-40°C~125°C
Cooling	Nature Convection

ABSOLUTE MAXIMUM RATINGS(4)	
These are stress ratings. Exposure of devices to any of these conditions may adversely affect long-term reliability.	
Input Surge Voltage(100mS)	
24 Models	40 Vdc max.
48 Models	80 Vdc max.
Soldering Temperature (1.5mm from case 10 sec. max.)	260°C max.

## VP - 3W 4:1 Regulated Single & Dual output

### PART NUMBER STRUCTURE



### MODEL SELECTION GUIDE

MODEL NUMBER	INPUT Voltage Range (Vdc)	INPUT Current		OUTPUT Voltage (Vdc)	OUTPUT Current		EFFICIENCY @FL(%)	Capacitor Load(uF)
		No-Load (mA)	Full Load (mA)		Min. load (mA)	Full load (mA)		
VP-243R3S3	9-36	16	165	3.3	0	900	75	680
VP-2405S3	9-36	16	160.3	5	0	600	78	470
VP-2409S3	9-36	16	156.3	9	0	333	80	100
VP-2412S3	9-36	16	156.3	12	0	250	80	68
VP-2415S3	9-36	16	156.3	15	0	200	80	47
VP-2424S3	9-36	16	156.3	24	0	125	80	22
VP-243R3D3	9-36	16	165	±3.3	0	±454	75	±330
VP-2405D3	9-36	16	160.3	±5	0	±300	78	±220
VP-2409D3	9-36	16	156.3	±9	0	±166	80	±47
VP-2412D3	9-36	16	156.3	±12	0	±125	80	±33
VP-2415D3	9-36	16	156.3	±15	0	±100	80	±22
VP-2424D3	9-36	16	156.3	±24	0	±63	80	±10
VP-483R3S3	18-72	14	82.5	3.3	0	900	75	680
VP-4805S3	18-72	14	80.1	5	0	600	78	470
VP-4809S3	18-72	14	78.1	9	0	333	80	100
VP-4812S3	18-72	14	78.1	12	0	250	80	68
VP-4815S3	18-72	14	78.1	15	0	200	80	47
VP-4824S3	18-72	14	78.1	24	0	125	80	22
VP-483R3D3	18-72	14	83.3	±3.3	0	±454	75	±330
VP-4805D3	18-72	14	80.1	±5	0	±300	78	±220
VP-4809D3	18-72	14	78.1	±9	0	±166	80	±47
VP-4812D3	18-72	14	78.1	±12	0	±125	80	±33
VP-4815D3	18-72	14	78.1	±15	0	±100	80	±22
VP-4824D3	18-72	14	78.1	±24	0	±63	80	±10

Suffix "H" means 3.5KVdc isolation  
 Suffix "P" means Plastic case instead of standard Metal Case

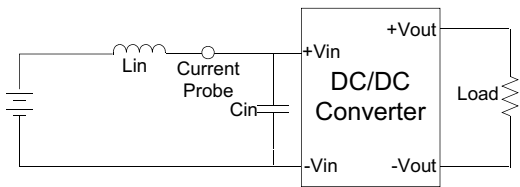
**NOTE**

1. Ripple/Noise measured with a 1uF ceramic capacitor.
2. Test by nominal input voltage and constant resistor load.
3. Measured Input reflected ripple current with a simulated source inductance of 12uH.
4. Exceeding the absolute ratings of the unit could cause damage. It is not allowed for continuous operating.

**TEST CONFIGURATIONS**

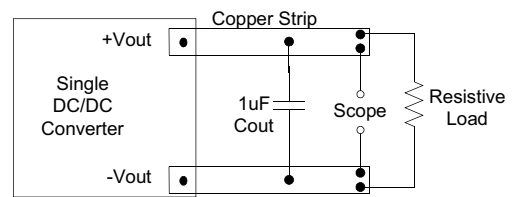
**Input Reflected Ripple Current Test Step**

Input reflected ripple current is measured through a source inductor  $L_{in}$  (12uH) and a source capacitor  $C_{in}$  (47uF, ESR<1.0Ω at 100KHz) at nominal input and full load.

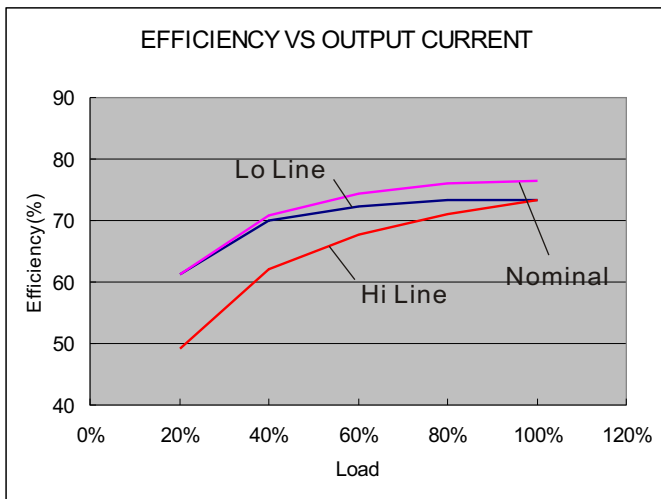


**Output Ripple & Noise Measurement Test**

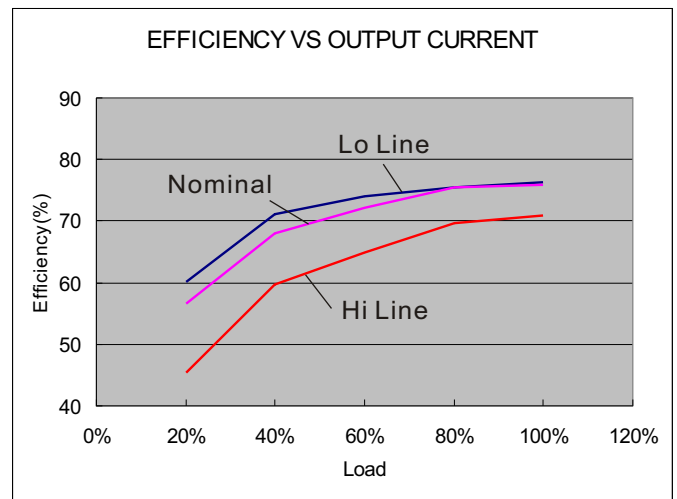
Use a capacitor  $C_{out}$  (1.0uF) measurement. The Scope measurement bandwidth is 0-20MHz.



**ELECTRICAL CHARACTERISTIC CURVES**



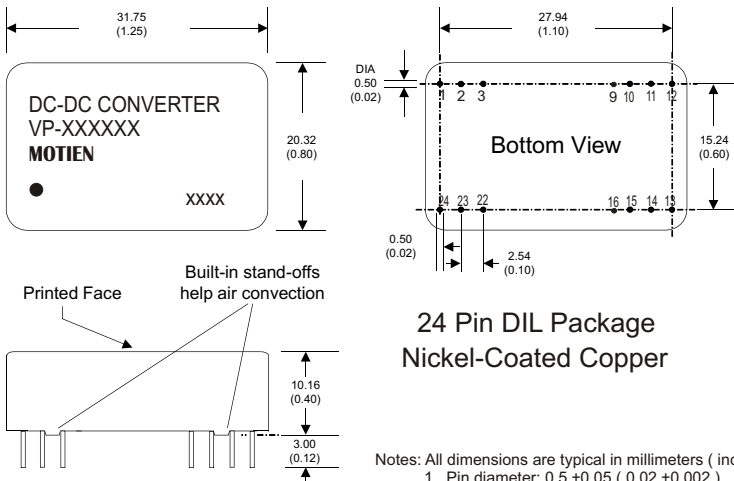
24 Models



48 Models

The models listed above is just for standard type. If you need the special specification product, please contact our service member by telephone presented in shortform cover or e-mail to : sales@motien.com.tw

**MECHANICAL SPECIFICATIONS**

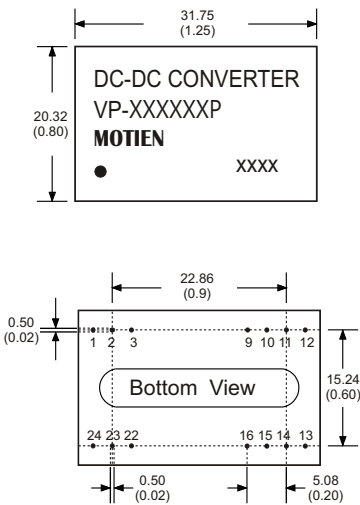


**24 Pin DIL Package  
Nickel-Coated Copper**

Notes: All dimensions are typical in millimeters ( inches ).  
 1. Pin diameter:  $0.5 \pm 0.05$  (  $0.02 \pm 0.002$  )  
 2. Pin pitch and length tolerance:  $\pm 0.35$  (  $\pm 0.014$  )  
 3. Case Tolerance:  $\pm 0.5$  (  $\pm 0.02$  )

PIN CONNECTIONS				
PIN NUMBER	SINGLE	DUAL	SINGLE-H	DUAL-H
1	+V Input	+V Input	N.P.	N.P.
2	N.C.	-V Output	-V Input	-V Input
3	N.C.	Common	-V Input	-V Input
9	N.P.	N.P.	N.P.	Common
10	-V Output	Common	N.P.	N.P.
11	+V Output	+V Output	N.C.	-V Output
12	-V Input	-V Input	N.P.	N.P.
13	-V Input	-V Input	N.P.	N.P.
14	+V Output	+V Output	+V Output	+V Output
15	-V Output	Common	N.P.	N.P.
16	N.P.	N.P.	-V Output	Common
22	N.C.	Common	+V Input	+V Input
23	N.C.	-V Output	+V Input	+V Input
24	+V Input	+V Input	N.P.	N.P.

**MECHANICAL SPECIFICATIONS**



**For "P" Case  
24 Pin DIL Package  
Non-Conductive Plastic**

Notes: All dimensions are typical in millimeters ( inches ).  
 1. Pin diameter:  $0.5 \pm 0.05$  (  $0.02 \pm 0.002$  )  
 2. Pin pitch and length tolerance:  $\pm 0.35$  (  $\pm 0.014$  )  
 3. Case Tolerance:  $\pm 0.5$  (  $\pm 0.02$  )

PIN CONNECTIONS				
PIN NUMBER	SINGLE	DUAL	SINGLE-H	DUAL-H
1	+V Input	+V Input	N.P.	N.P.
2	N.C.	-V Output	-V Input	-V Input
3	N.C.	Common	-V Input	-V Input
9	N.P.	N.P.	N.P.	Common
10	-V Output	Common	N.P.	N.P.
11	+V Output	+V Output	N.C.	-V Output
12	-V Input	-V Input	N.P.	N.P.
13	-V Input	-V Input	N.P.	N.P.
14	+V Output	+V Output	+V Output	+V Output
15	-V Output	Common	N.P.	N.P.
16	N.P.	N.P.	-V Output	Common
22	N.C.	Common	+V Input	+V Input
23	N.C.	-V Output	+V Input	+V Input
24	+V Input	+V Input	N.P.	N.P.