

VG-5W Series



5W 2:1 Regulated Single & Dual output

Features

- Wide 2:1 Input Range
- Full SMD Technology
- 1500 VDC Isolation, Up to 3500 VDC
- Continuous Short Circuit Protection
- Efficiency up to 83%
- -40 ~ 85°C Operation Temperature Range
- Metal Case Standard, Optional Plastic Case



The VG series is a family of cost effective 5W single & dual output DC-DC converters. These converters are consisted with Nickel-coated copper in a 24-pin DIL package with high performance features such as 1500 VDC ~ 3500VDC input/output isolation voltage, continuous short circuit protection with automatic restart and tight line / load regulation. Devices are encapsulated using flame retardant resin. Input voltages of 12, 24 and 48 with output voltage of 3.3, 5, 9, 12, 15, 24, ± 3.3 , ± 5 , ± 9 , ± 12 , ± 15 and ± 24 Vdc. High performance features include high efficiency operation up to 83% and output voltage accuracy of $\pm 1\%$ maximum.

All specifications typical at Ta=25°C, nominal input voltage and full load unless otherwise specified

OUTPUT SPECIFICATIONS	
Voltage accuracy	$\pm 1\%$
Line regulation	$\pm 0.5\%$
Load regulation	$\pm 0.5\%$
	(Output 3.3V / ± 3.3 V Model) $\pm 1.5\%$
Ripple & noise (20 MHz bandwidth)(1)	60mV pk-pk
Short circuit protection	Indefinite (Automatic Recovery)
Temperature coefficient	$\pm 0.02\%/^{\circ}\text{C}$
Capacitor load(2)	See table

INPUT SPECIFICATIONS	
Voltage Range	See table
Max. Input Current	See table
No-Load Input Current	See table
Input Filter	PI Type
Input Reflected Ripple Current(3)	35mA pk-pk

GENERAL SPECIFICATIONS	
Efficiency	See table, typ.
I/O Isolation Voltage(3 sec)	
Input/Output	1500~3500Vdc
Metal Case/Input & Output	1000Vdc
I/O Isolation Capacitance	470 pF, typ.
I/O Isolation Resistance	1000M Ohm
Switching Frequency	266kHz, typ.
Humidity	95% rel H
Reliability Calculated MTBF(MIL-HDBK-217 F)	>1.121 Mhrs
Safety Standard : (designed to meet)	IEC 60950-1

PHYSICAL SPECIFICATIONS	
Case Material	Nickel-coated Copper
	Non-conductive Black Plastic(UL94V-0 rated)
Base Material	Non-conductive Black Plastic(UL94V-0 rated)
Pin Material	$\varnothing 0.5$ mm Brass Solder-coated
Potting Material	Epoxy (UL94V-0 rated)
Weight	17.0g(Metal Case)/13.5g(Plastic Case)
Dimensions	1.25"x0.8"x0.4"

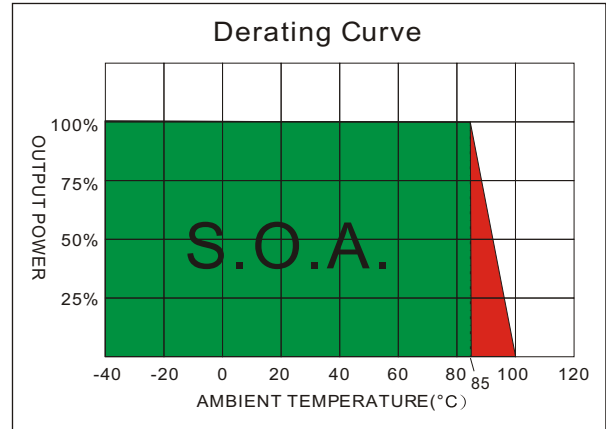
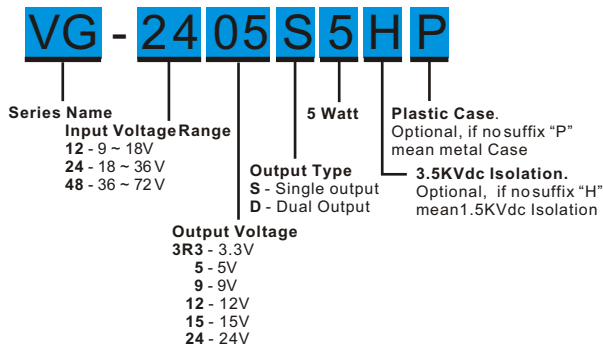
ENVIRONMENT SPECIFICATIONS	
Operating Temperature	-40°C~85°C(See Derating Curve)
Maximum Case Temperature	100°C
Storage Temperature	-40°C~125°C
Cooling	Nature Convection

ABSOLUTE MAXIMUM RATINGS(4)	
These are stress ratings. Exposure of devices to any of these conditions may adversely affect long-term reliability.	
Input Surge Voltage(100mS)	
12 Models	24 Vdc, max.
24 Models	40 Vdc, max.
48 Models	80 Vdc, max.
Soldering Temperature	260°C, max.
(1.5mm from case 10sec.max.)	

The information and specifications contained in this data sheet are believed to be correct at time of publication. However, MOTIEN Technologies accepts no responsibility for consequences arising from printing errors or inaccuracies. Specifications are subject to change without notice. No rights under any patent accompany the sale of any such product(s) or information contained herein.

VG - 5W 2:1 Regulated Single & Dual output

PART NUMBER STRUCTURE



MODEL SELECTION GUIDE

MODEL NUMBER	INPUT Voltage Range (Vdc)	INPUT Current		OUTPUT Voltage (Vdc)	OUTPUT Current		EFFICIENCY @FL(%)	Capacitor Load(uF)
		No-Load (mA)	Full Load (mA)		Min. load (mA)	Full load (mA)		
VG-123R3S5	9-18	30	490	3.3	0	1300	73	1000
VG-1205S5	9-18	30	542	5	0	1000	77	1000
VG-1209S5	9-18	30	534	9	0	555	78	680
VG-1212S5	9-18	30	514	12	0	417	81	330
VG-1215S5	9-18	30	520	15	0	333	80	220
VG-1224S5	9-18	30	520	24	0	208	80	68
VG-123R3D5	9-18	30	565	±3.3	0	±750	73	±680
VG-1205D5	9-18	30	542	±5	0	±500	77	±330
VG-1209D5	9-18	30	520	±9	0	±278	80	±220
VG-1212D5	9-18	30	520	±12	0	±208	80	±100
VG-1215D5	9-18	30	528	±15	0	±167	79	±47
VG-1224D5	9-18	30	520	±24	0	±104	80	±33
VG-243R3S5	18-36	20	239	3.3	0	1300	75	1000
VG-2405S5	18-36	20	261	5	0	1000	80	1000
VG-2409S5	18-36	20	254	9	0	555	82	680
VG-2412S5	18-36	20	261	12	0	417	80	330
VG-2415S5	18-36	20	255	15	0	333	82	220
VG-2424S5	18-36	20	255	24	0	208	82	68
VG-243R3D5	18-36	20	275	±3.3	0	±750	75	±680
VG-2405D5	18-36	20	267	±5	0	±500	78	±330
VG-2409D5	18-36	20	251	±9	0	±278	83	±220
VG-2412D5	18-36	20	261	±12	0	±208	80	±100
VG-2415D5	18-36	20	261	±15	0	±167	80	±47
VG-2424D5	18-36	20	261	±24	0	±104	80	±33
VG-483R3S5	36-72	12	120	3.3	0	1300	75	1000
VG-4805S5	36-72	12	131	5	0	1000	80	1000
VG-4809S5	36-72	12	127	9	0	555	82	680
VG-4812S5	36-72	12	131	12	0	417	80	330
VG-4815S5	36-72	12	126	15	0	333	83	220
VG-4824S5	36-72	12	126	24	0	208	83	68

Suffix "H" means 3.5KVdc isolation
 Suffix "P" means Plastic case instead of standard Metal Case

VG - 5W 2:1 Regulated Single & Dual output

MODEL NUMBER	INPUT Voltage Range (Vdc)	INPUT Current		OUTPUT Voltage (Vdc)	OUTPUT Current		EFFICIENCY @FL(%)	Capacitor Load(uF)
		No-Load (mA)	Full Load (mA)		Min. load (mA)	Full load (mA)		
VG-483R3D5	36-72	12	142	±3.3	0	±750	73	±680
VG-4805D5	36-72	12	132	±5	0	±500	79	±330
VG-4809D5	36-72	12	132	±9	0	±278	79	±220
VG-4812D5	36-72	12	131	±12	0	±208	80	±100
VG-4815D5	36-72	12	131	±15	0	±167	80	±47
VG-4824D5	36-72	12	131	±24	0	±104	80	±33

Suffix "H" means 3.5KVdc isolation

Suffix "P" means Plastic case instead of standard Metal Case

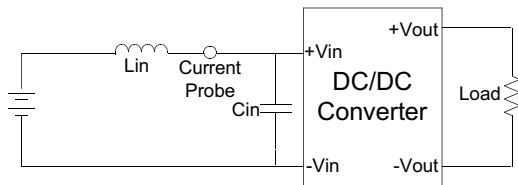
NOTE

1. Ripple/Noise measured with a 1uF ceramic capacitor.
2. Test by nominal input voltage and constant resistor load.
3. Measured Input reflected ripple current with a simulated source inductance of 12uH.
4. Exceeding the absolute ratings of the unit could cause damage. It is not allowed for continuous operating.

TEST CONFIGURATIONS

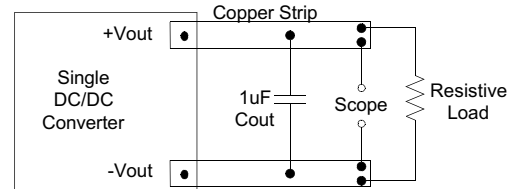
Input Reflected Ripple Current Test Step

Input reflected ripple current is measured through a source inductor L_{in} (12uH) and a source capacitor C_{in} (47uF, ESR<1.0Ω at 100KHz) at nominal input and full load.

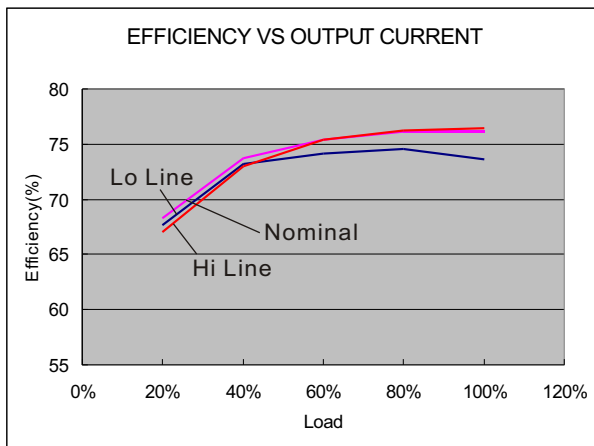


Output Ripple & Noise Measurement Test

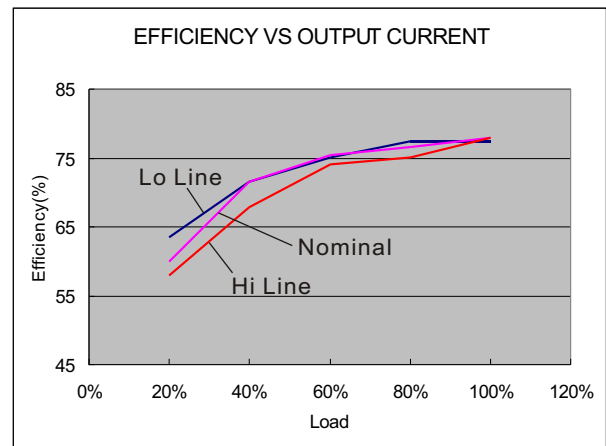
Use a capacitor C_{out} (1.0uF) measurement. The Scope measurement bandwidth is 0-20MHz.



ELECTRICAL CHARACTERISTIC CURVES

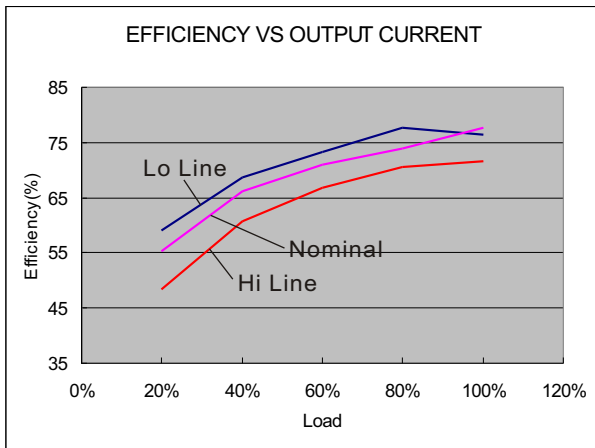


12 Models



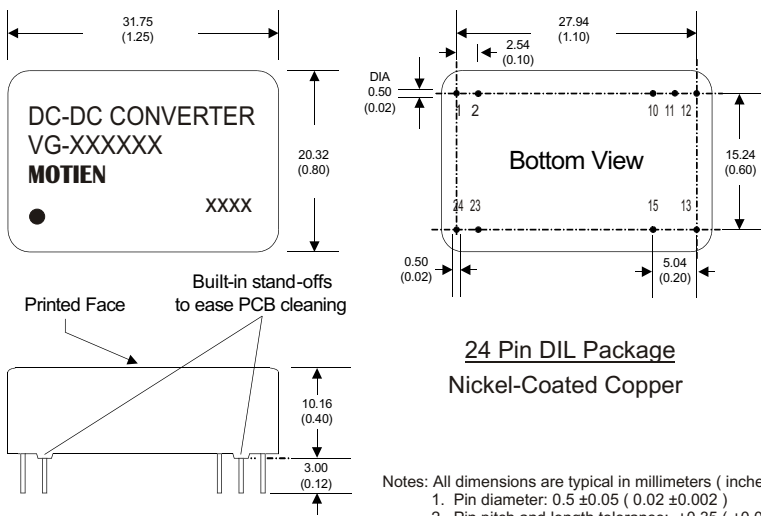
24 Models

VG - 5W 2:1 Regulated Single & Dual output



48 Models

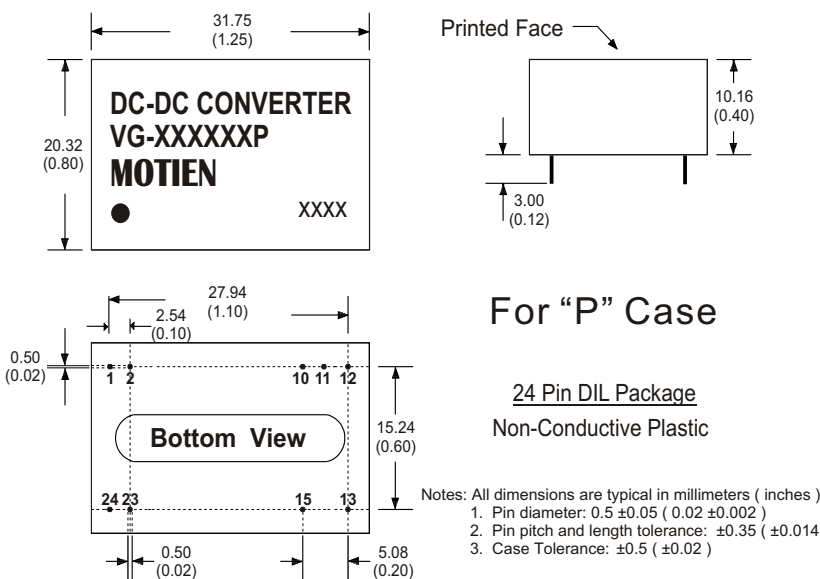
MECHANICAL SPECIFICATIONS



PIN CONNECTIONS		
PIN NUMBER	SINGLE	DUAL
1	+V Input	+V Input
2	+V Input	+V Input
10	N.C.	Common
11	N.C.	Common
12	-V Output	N.C.
13	+V Output	-V Output
15	N.C.	+V Output
23	-V Input	-V Input
24	-V Input	-V Input

(The Pin Connection of high isolation one is the same with normal one.)

MECHANICAL SPECIFICATIONS



PIN CONNECTIONS		
PIN NUMBER	SINGLE	DUAL
1	+V Input	+V Input
2	+V Input	+V Input
10	N.C.	Common
11	N.C.	Common
12	-V Output	N.C.
13	+V Output	-V Output
15	N.C.	+V Output
23	-V Input	-V Input
24	-V Input	-V Input

(The Pin Connection of high isolation one is the same with normal one.)