

**SERIES:** PUZ3-D | **DESCRIPTION:** DC-DC CONVERTER

**FEATURES**

- 3 W isolated output
- smaller package
- single/dual regulated output
- 1,500 Vdc isolation
- continuous short circuit, over current protection
- temperature range (-40~105°C)
- high efficiency at light load
- efficiency up to 86%



MODEL	input voltage		output voltage (Vdc)	output current		output power max (W)	ripple and noise <sup>1</sup> max (mVp-p)	efficiency typ (%)
	typ (Vdc)	range (Vdc)		min (mA)	max (mA)			
PUZ3-D5-S5-D	5	4.5~9	5	30	600	3	60	73
PUZ3-D5-S12-D	5	4.5~9	12	13	250	3	60	76
PUZ3-D5-S15-D	5	4.5~9	15	10	200	3	60	76
PUZ3-D5-D5-D	5	4.5~9	±5	±15	±300	3	60	75
PUZ3-D5-D12-D	5	4.5~9	±12	±6	±125	3	60	76
PUZ3-D5-D15-D	5	4.5~9	±15	±5	±100	3	60	76
PUZ3-D12-S5-D	12	9~18	5	30	600	3	60	80
PUZ3-D12-S12-D	12	9~18	12	13	250	3	60	81
PUZ3-D12-S15-D	12	9~18	15	10	200	3	60	82
PUZ3-D12-S24-D	12	9~18	24	7	125	3	60	83
PUZ3-D12-D5-D	12	9~18	±5	±15	±300	3	60	80
PUZ3-D12-D12-D	12	9~18	±12	±6	±125	3	60	81
PUZ3-D12-D15-D	12	9~18	±15	±5	±100	3	60	82
PUZ3-D24-S5-D	24	18~36	5	30	600	3	60	81
PUZ3-D24-S12-D	24	18~36	12	13	250	3	60	82
PUZ3-D24-S15-D	24	18~36	15	10	200	3	60	84
PUZ3-D24-D5-D	24	18~36	±5	±15	±300	3	60	81
PUZ3-D24-D12-D	24	18~36	±12	±6	±125	3	60	82
PUZ3-D24-D15-D	24	18~36	±15	±5	±100	3	60	84
PUZ3-D48-S5-D	48	36~75	5	30	600	3	60	82
PUZ3-D48-S12-D	48	36~75	12	13	250	3	60	83
PUZ3-D48-S15-D	48	36~75	15	10	200	3	60	86
PUZ3-D48-D5-D	48	36~75	±5	±15	±300	3	60	82
PUZ3-D48-D12-D	48	36~75	±12	±6	±125	3	60	83
PUZ3-D48-D15-D	48	36~75	±15	±5	±100	3	60	84

Notes: 1. ripple and noise are measured at 20 MHz BW by "parallel cable" method



## SAFETY AND COMPLIANCE (CONTINUED)

parameter	conditions/description	min	typ	max	units
surge	IEC/EN61000-4-5, class B, ± 2kV (external circuit required, see Figure 1-b)				
conducted immunity	IEC/EN61000-4-6, class A, 3 Vr.m.s				
voltage dips & interruptions	IEC/EN61000-4-29, class B, 0%-70%				
MTBF	as per MIL-HDBK-217F @ 25°C	1,000,000			hours
RoHS compliant	yes				

## ENVIRONMENTAL

parameter	conditions/description	min	typ	max	units
operating temperature	see derating curve	-40		105	°C
storage temperature		-55		125	°C
storage humidity	non-condensing			95	%
temperature rise	at full load, Ta=25°C		25		°C

## SOLDERABILITY

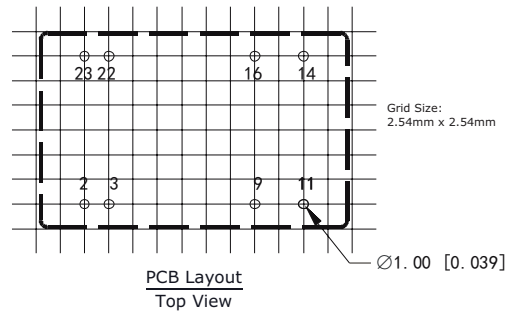
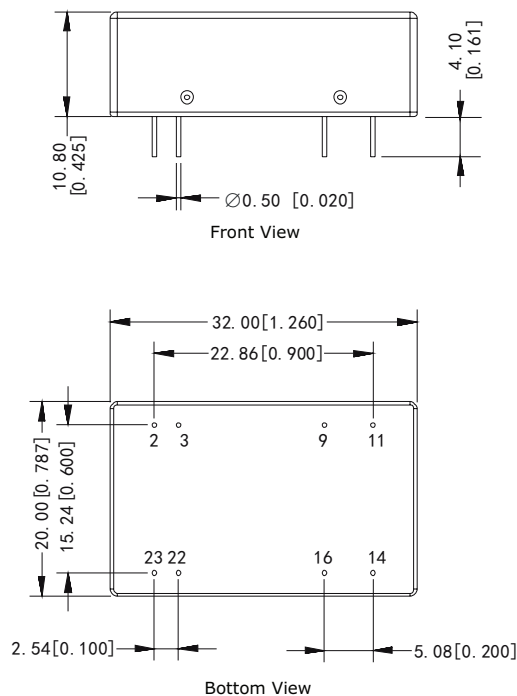
parameter	conditions/description	min	typ	max	units
hand soldering	1.5 mm from case for 10 seconds			300	°C
wave soldering	see wave soldering profile			260	°C

## MECHANICAL

parameter	conditions/description	min	typ	max	units
dimensions	32.00 x 20.00 x 10.80 (1.26 x 0.787 x 0.425 inch)				mm
case material	aluminum alloy				
weight			14		g

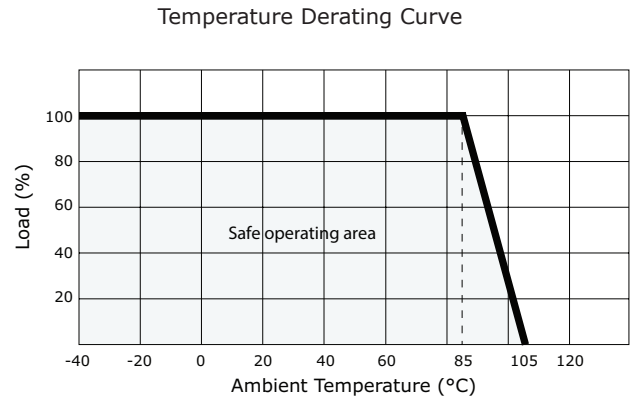
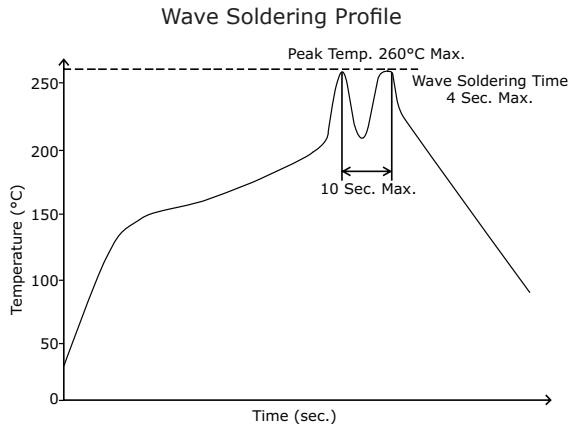
## MECHANICAL DRAWING

units: mm[inch]  
 tolerance: ±0.25[±0.010]  
 pin section tolerance: ±0.10[±0.004]



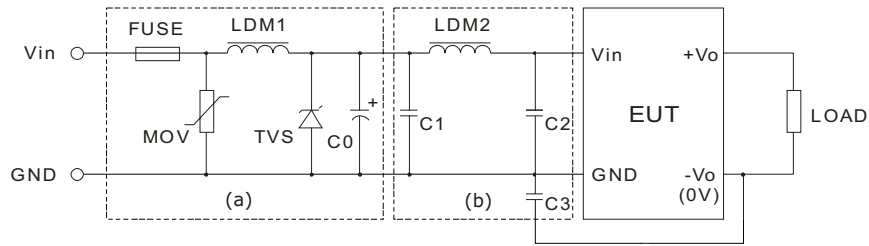
PIN CONNECTIONS		
PIN	Single Output	Dual Output
2, 3	GND	GND
9	No Pin	0V
11	NC	-Vo
14	+Vo	+Vo
16	0V	0V
22, 23	Vin	Vin

## DERATING CURVES



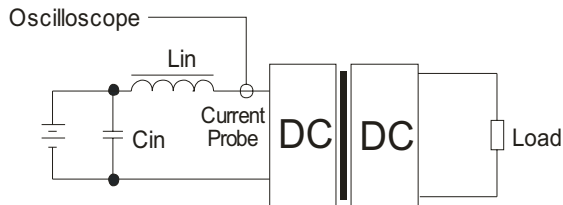
## EMC RECOMMENDED CIRCUIT

Figure 1



Recommended external circuit components				
Vin (Vdc)	5	12	24	48
FUSE	choose according to practical input current			
MOV	--	--	10D560K	10D101K
LDM1	--	--	56μH	56μH
TVS	SMCJ13A	SMCJ28A	SMCJ48A	SMCJ90A
C0	680μF/16V	680μF/25V	120μF/50V	120μF/100V
C1	4.7μF/50V	4.7μF/50V	4.7μF/50V	4.7μF/100V
LDM2	12μH	12μH	12μH	12μH
C2	4.7μF/50V	4.7μF/50V	4.7μF/50V	4.7μF/100V
C3	1μF	1μF	1μF	1μF

## TEST CONFIGURATION



External components	
Lin	4.7μH
Cin	220μF, ESR < 1.0Ω at 100 KHz

Note: Input reflected-ripple current is measured with an inductor Lin and Capacitor Cin to simulate source impedance.

## APPLICATION NOTES

### 1. Output load requirement

To ensure this module can operate efficiently and reliably, the minimum output load may not be less than 5% of the full load during operation. If the actual output power is low, connect a resistor at the output end in parallel to increase the load.

### 2. Recommended circuit

This series has been tested according to the following recommended testing circuit before leaving the factory. This series should be tested under load (see Figure 2). If you want to further decrease the input/output ripple, you can increase the capacitance accordingly or choose capacitors with low ESR. However, the capacitance of the output filter capacitor must be appropriate. If the capacitance is too high, a startup problem might arise. For every channel of the output, to ensure safe and reliable operation, the maximum capacitance must be less than the maximum capacitive load (see Table 1).

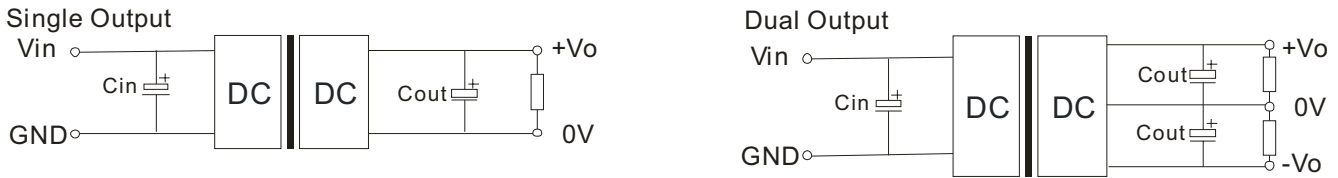


Figure 2

Table 1

Vin (Vdc)	Cin (μF)	Cout (μF/mA)
5	100	10/100
12	100	10/100
24	10~47	10/100
48	10~47	10/100

### 3. Input Current

When it is used in an unregulated condition, make sure that the input fluctuations and ripple voltage do not exceed the module standard. Refer to Figure 3 for the startup current of this dc-dc module.

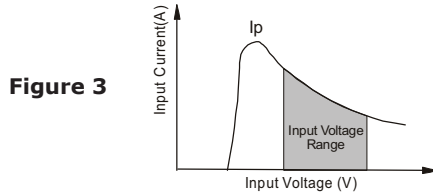


Figure 3

Vin (Vdc)	Ip (mA)
5	1400
12	620
24	300
48	150

Note:

1. Minimum load shouldn't be less than 5%, otherwise ripple may increase dramatically. Operation under minimum load will not damage the converter, however, they may not meet all specifications listed.
2. Maximum capacitive load is tested at input voltage range and full load.
3. All specifications are measured at Ta=25°C, humidity<75%, nominal input voltage and rated output load unless otherwise specified.

## REVISION HISTORY

---

rev.	description	date
1.0	initial release	03/19/2013

The revision history provided is for informational purposes only and is believed to be accurate.



**CUI INC**<sup>®</sup>

**Headquarters**  
20050 SW 112th Ave.  
Tualatin, OR 97062  
**800.275.4899**

Fax 503.612.2383  
**cui.com**  
techsupport@cui.com

CUI offers a two (2) year limited warranty. Complete warranty information is listed on our website.

CUI reserves the right to make changes to the product at any time without notice. Information provided by CUI is believed to be accurate and reliable. However, no responsibility is assumed by CUI for its use, nor for any infringements of patents or other rights of third parties which may result from its use.

CUI products are not authorized or warranted for use as critical components in equipment that requires an extremely high level of reliability. A critical component is any component of a life support device or system whose failure to perform can be reasonably expected to cause the failure of the life support device or system, or to affect its safety or effectiveness.