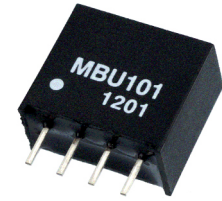


**FEATURES**

- ▶ Miniature SIP-Package with Industry Standard Pinout
- ▶ Package Dimension:
  - 11.5 x 10.2 x \*6.1 mm (0.45"x 0.40"x 0.24") 3.3V,5V&12V Models
  - 11.5 x 10.2 x \*7.1 mm (0.45"x 0.40"x 0.28") 24V Models
- ▶ Single and Dual Output Models
- ▶ I/O-Isolation 1000 VDC
- ▶ Operating Temp. Range -40°C to +85°C
- ▶ 3 Years Product Warranty



**PRODUCT OVERVIEW**

The MBU100 series is a range of 1W DC/DC converters in a miniature SIP Package featuring I/O-isolation of 1000VDC. A high efficiency allows an operating temperature range of -40°C to +85°C.

These converters offer an economical solution for many space critical applications where a voltage has to be isolated i.e for noise reduction, ground loop elimination, digital interfaces or for board level power distribution.

**Model Selection Guide**

Model Number	Input Voltage (Range) VDC	Output Voltage VDC	Output Current		Input Current		Load Regulation % (max.)	Max. capacitive Load µF	Efficiency (typ.) @Max. Load %
			Max.	Min.	@Max. Load	@No Load			
			mA	mA	mA(typ.)	mA(typ.)			
MBU135	3.3 (2.97 ~ 3.63)	3.3	260	6	351	35	14	33	74
MBU131		5	200	4	394		14		77
MBU105	5 (4.5 ~ 5.5)	3.3	260	6	238	30	11	33	72
MBU101		5	200	4	290		11		69
MBU102		9	110	2	260		8		76
MBU103		12	84	1.5	262		7		77
MBU104		15	67	1	258		6		78
MBU111		5	200	4	117		9		71
MBU112		9	110	2	107		5		77
MBU113	12 (10.8 ~ 13.2)	12	84	1.5	106	13	5	33	79
MBU114		15	67	1	105		4		80
MBU121		5	200	4	60		8		70
MBU122	24 (21.6 ~ 26.4)	9	110	2	54	7	5	33	76
MBU123		12	84	1.5	53		4		79
MBU124		15	67	1	53		4		79

**Input Specifications**

Parameter	Model	Min.	Typ.	Max.	Unit
Input Voltage Range	3.3V Input Models	2.97	3.3	3.63	VDC
	5V Input Models	4.5	5	5.5	
	12V Input Models	10.8	12	13.2	
	24V Input Models	21.6	24	26.4	
Input Surge Voltage (1 sec. max.)	3.3V Input Models	-0.7	---	6	VDC
	5V Input Models	-0.7	---	9	
	12V Input Models	-0.7	---	18	
	24V Input Models	-0.7	---	30	
Reverse Polarity Input Current	All Models	---	---	0.3	A
Internal Filter Type		Internal Capacitor			
Internal Power Dissipation		---	---	450	mW



**Output Specifications**

Parameter	Conditions	Min.	Typ.	Max.	Unit
Output Voltage Accuracy		---	±1.0	±3.0	%
Line Regulation	For Vin Change of 1%	---	±1.2	±1.5	%
Load Regulation	Io=20% to 100%	See Model Selection Guide			
Ripple & Noise	max. 20MHz Bandwidth	---	100	150	mV <sub>P-P</sub>
Temperature Coefficient		---	±0.01	±0.02	%/°C
Short Circuit Protection		0.5 Second Max.			

**General Specifications**

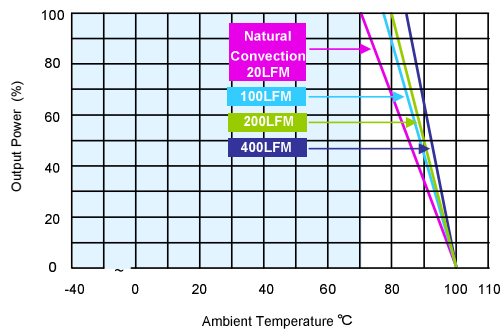
Parameter	Conditions	Min.	Typ.	Max.	Unit
I/O Isolation Voltage (rated)	60 Seconds	1000	---	---	VDC
I/O Isolation Resistance	500 VDC	1000	---	---	MΩ
I/O Isolation Capacitance	100KHz, 1V	---	60	100	pF
Switching Frequency		50	90	110	KHz
MTBF (calculated)	MIL-HDBK-217F@25°C, Ground Benign	2,000,000	---	---	Hours

**Input Fuse**

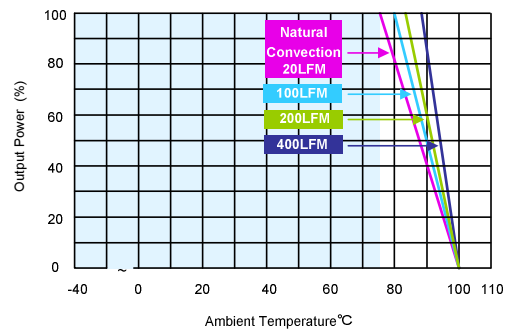
3.3V Input Models	5V Input Models	12V Input Models	24V Input Models
800mA Slow-Blow Type	500mA Slow-Blow Type	200mA Slow-Blow Type	100mA Slow-Blow Type

**Environmental Specifications**

Parameter	Conditions	Min.	Max.	Unit
Operating Ambient Temperature Range (See Power Derating Curve)	Ambient	-40	+85	°C
Case Temperature		---	+90	°C
Storage Temperature Range		-50	+125	°C
Humidity (non condensing)		---	95	% rel. H
Cooling	Free-Air convection			
Lead Temperature (1.5mm from case for 10Sec.)		---	260	°C

**Power Derating Curve**


(5V Output Only)

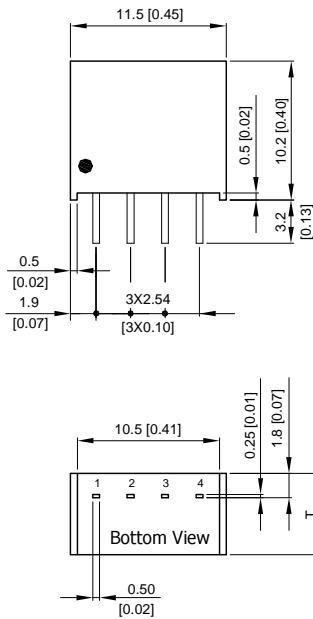


(All Other Output)

**Notes**

- Specifications typical at Ta=+25°C, resistive load, nominal input voltage and rated output current unless otherwise noted.
- Ripple & Noise measurement bandwidth is 0-20MHz.
- These power converters require a minimum output loading to maintain specified regulation, operation under no-load conditions will not damage these modules; however they may not meet all specifications listed.
- All DC/DC converters should be externally fused at the front end for protection.
- Other input and output voltage may be available, please contact factory.
- That "natural convection" is about 20LFM but is not equal to still air (0 LFM).
- Specifications are subject to change without notice.



**Package Specifications**
**Mechanical Dimensions**

**Pin Connections**

Pin	Function
1	-Vin
2	+Vin
3	-Vout
4	+Vout

T: 6.1mm(0.24 inch) for 3.3V&amp;5V&amp;12V Input Models

T: 7.1mm(0.28 inch) for 24V Input Models

- ▶ All dimensions in mm (inches)
- ▶ Tolerance: X.X±0.25 (X.XX±0.01)  
X.XX±0.13 ( X.XXX±0.005)
- ▶ Pins ±0.05(±0.002)

**Physical Characteristics**

Case Size(3.3V, 5V, 12V Input) : 11.5x6.1x10.2mm (0.45x0.24x0.40 inches)

Case Size(24V Input) : 11.5x7.1x10.2mm (0.45x0.28x0.40 inches)

Case Material : Non-Conductive Black Plastic (flammability to UL 94V-0 rated)

Pin Material : Alloy 42

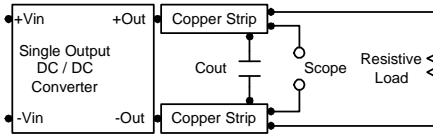
Weight(3.3V, 5V, 12V Input) : 1.3g

Weight(24V Input) : 1.7g



**Test Setup**
**Peak-to-Peak Output Noise Measurement Test**

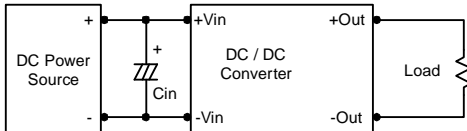
Use a Cout 0.33 $\mu$ F ceramic capacitor. Scope measurement should be made by using a BNC socket, measurement bandwidth is 0-20 MHz. Position the load between 50 mm and 75 mm from the DC/DC Converter.


**Technical Notes**
**Maximum Capacitive Load**

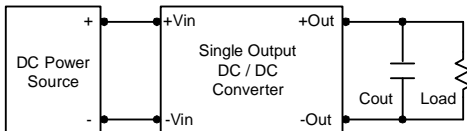
The MBU100 series has limitation of maximum connected capacitance at the output. The power module may be operated in current limiting mode during start-up, affecting the ramp-up and the startup time. For optimum performance we recommend 33 $\mu$ F maximum capacitive load for devices. The maximum capacitance can be found in the data sheet.

**Input Source Impedance**

The power module should be connected to a low ac-impedance input source. Highly inductive source impedances can affect the stability of the power module. In applications where power is supplied over long lines and output loading is high, it may be necessary to use a capacitor at the input to ensure startup. Capacitor mounted close to the power module helps ensure stability of the unit, it is comended to use a good quality low Equivalent Series Resistance (ESR < 1.0 $\Omega$  at 100 KHz) capacitor of a 2.2 $\mu$ F for the 3.3V, 5V input devices, a 1.0 $\mu$ F for the 12V input devices and a 0.47 $\mu$ F for the 24V devices.


**Output Ripple Reduction**

A good quality low ESR capacitor placed as close as practicable across the load will give the best ripple and noise performance. To reduce output ripple, it is recommended to use 1 $\mu$ F capacitors at the output.


**Thermal Considerations**

Many conditions affect the thermal performance of the power module, such as orientation, airflow over the module and board spacing. To avoid exceeding the maximum temperature rating of the components inside the power module, the case temperature must be kept below 90°C. The derating curves are determined from measurements obtained in a test setup.

