

产品简介 (Introduction)

WDF700 DC/DC电源模块是一款性价比极高的产品,采用 4.59"x2.40"x0.50"的标准工业全砖结构及管脚封装,提供标准的遥控、输出电压调节和遥感补偿功能。**WDF700** 采用宽输入范围36~75V(19-36V)。具有输入欠压保护,输出过压、过流保护、过温保护和短路保护功能,提供 1500Vdc的高隔离耐压。**WDF700**应用铝基 PCB技术,铝基最大温度可达 100°C无需降额。

The **WDF700** of switching DC-DC converters is one of the most cost effective options available in component power. The **WDF700** uses an Industry Standard Full Brick size of 4.59"x2.40"x0.50" and pin out configuration, provides standard control, trim, and sense functions. The **WDF700** adopts wide input range 36~75V(19-36V). This products has input LVP, output OVP, OCP, short circuit protection and over temperature protection, and the isolation voltage is 1500Vdc. Using aluminumbased plate, the maximum base-plate temperature can reach 100 °C without derating.

应用领域 (Applications)

- ◆ 电信 Telecommunications
- ◆ 数据互换 Data Communications
- ◆ 电力系统 Electrically System

产品优势 (Benefits)

- ◆ 高效率 High Efficiency

基本特性 (Features)

- ◆ 工业标准全砖 (Industry Standard Full Brick)
- ◆ 高功率密度 (High Power Density)
- ◆ 高隔离电压 (1500V Input-Output Isolation)
- ◆ 铝基板工艺 (Aluminum Baseplate Technology)
- ◆ 带有遥控和输出调节功能 (Control And Trim Functions)
- ◆ 遥感补偿 (Remote Sense)

电气特性 Electrical Specifications

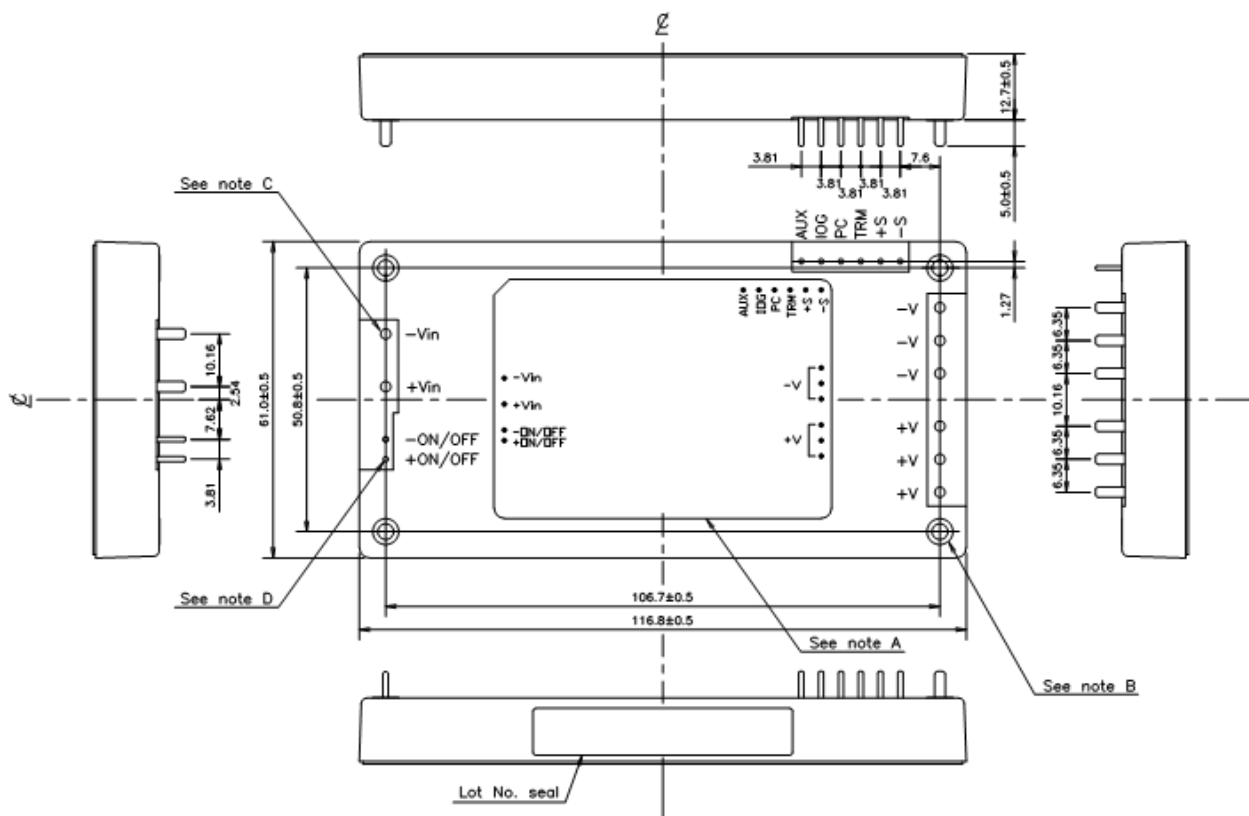
输出特性Output	Min	Typ	Max	Units	Notes
功率 Power	300		700	W	
源效应 Line Regulation			±0.2	%	
负载效应 Load Regulation			±0.5	%	
动态响应时间 Dynamic Response			±4% VoPkdeviatin 200μS Settling time		50~75%load 50~25% load
总遥感补偿 Total Remote Sense Compensation			1.0	Vdc	
纹波和噪声(峰峰值) Ripple and Noise (p-p)			180	mV	20MHz Bandwidth
容性负载 Maximum..Capacitor Load	2200			μF	
温度系数 Temperature Regulation			±0.02	%/°C	
过温保护 Over-Temperature Protection	105	110	115	°C	铝基板温度aluminum based plate temperature
短路保护 Short-Circuit Protection	长期短路自恢复 Continuous, Automatic Recovery				

遥控 Control		Off			ON/OFF pin 悬空 ON/OFF pin left open
		On			On/oFF与+VIN/-VIN相连 ON/OFF pin is Short-ON
逻辑低 Logic Low			0.8	Vdc	
综合特性 General	Min	Typ	Max	Units	Notes
隔离电压 Isolation Voltage			1500	Vdc	Input-Output
			1500	Vdc	Input-Case
			500	Vdc	Output -Case
开关频率 Switching Frequency		300		KHz	
效率 Efficiency		92		%	Vin=48Vdc Full Load
MTBF		2×10^6		h	Bellcore TR332, Tc=25°C
管脚焊接温度 Pin Solder Temperature			250	°C	Wave Solder <10S
手工焊接时间 Hand Soldering Time			5	s	Iron Temperature 425 °C
工作壳温 Case Temperature	-40		+100	°C	
储存温度 Storage Temperature	-55		+125	°C	
相对湿度 Relative Humidity	10		90	%	
重量 Weight		225		Gram s	No include
安全 Safety	EN60950				

产品列表

产品型号 Models	输入电压范围 Input Voltage Range (V)	标称输出电压/电流 Output Voltage/ Io1 (V) /Io1(A)	输出功率 Output power (W)	典型效率 Efficiency	输出纹波噪声 (峰-峰值mv) Ripple and noise
WDF600-24S28	19-36	28.0/21.5	600	89%	180
WDF500-48S12	36-72	12.0/42.0	500	89%	100
WDF300-24S24	18-36	24.0/12.5	300	85%	240
WDF700-48S24	36-72	24.0/29.0	700	94%	180
WDF500-48S28	36-72	28.0/18.0	500	94%	180
WDF700-48S28	36-72	28.0/25.0	700	94%	180

机械图及管脚说明 (Mechanical Chart、Pins)



管脚	1	2	3	4	5、6、7	8、9、10	11	12	13	14	15	16
定义	-Vin	+Vin	-ON/ OFF	+ON/ OFF	GND	Vo1	AUX	IOG	PC	TRIM	+S	-S
说明	输入 负	输入 正	遥控 负	遥控 正	输出地	输出正	辅助 电源	状态 显示	均流	输出调节 端	正补偿	负补偿

注:安装定位尺寸公差按 GB/T1804-2000 F 级标准、外型尺寸公差按 GB / T1804-2000 C 级标准。